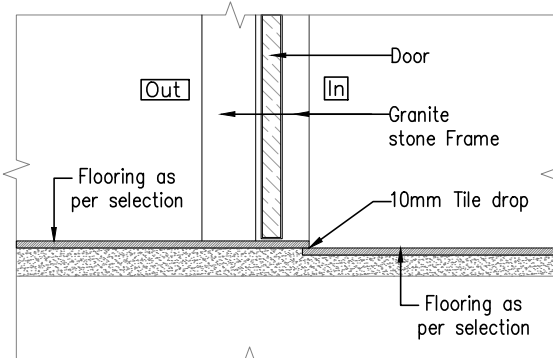


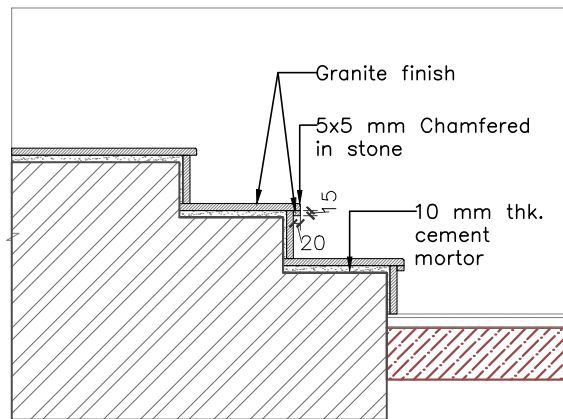
LAST SAVED BY: kparikh 19/5/25 12:47 PM

This drawing is property of Mamta Shah & Associates. Without our prior consent, it must be neither copied nor made available to third parties for the purpose other than for which it is meant.

PLOTTED BY: Khyati M. Parikh



Section-AA
Scale 1:10



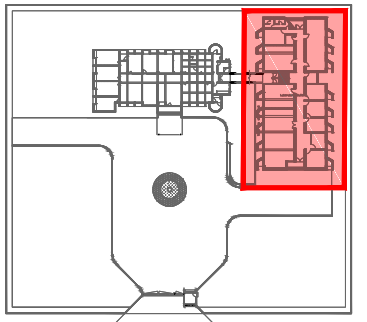
Section-XX
Scale 1:20

| Legend for Flooring | | |
|----------------------------|--|----------------------------------|
| (B) | | Vitrified Tile (1200x600mm) |
| (C) | | Re-polish on existing Kota Stone |
| Matt Finish Vitrified Tile | | |

| Legends for hatch | |
|-------------------|-----------------------------|
| | Existing wall masonry |
| | Existing RCC structure |
| | Proposed Brick Wall masonry |

| Rev | Date | Issued | Issued to | Issued for | Author |
|-----|----------|--------|-----------|------------|--------|
| R2 | 19-05-25 | SC/PR | GMDC | Tender | KBP |
| R1 | 22-02-25 | SC/PR | GMDC | Tender | KBP |
| R0 | 29-02-24 | SC/PR | GMDC | Tender | KBP |

Key Plan:



Project: GMDC Township Development

Drawing: Flooring Layout_ Ground Floor
Laboratory Building
Sheet 01

| | | | |
|---------------|------------------------|---------------|-----------|
| Drawing Code: | 2310_INT_TD_LAB_FLR_R2 | | |
| Print Size: | A3 | Scale: | 1:100 |
| File Title: | 2310_INT_TD_LAB_FLR_R2 | | |
| Project Code: | MSA 2310 | Project Type: | Arc & Int |
| Location: | Ambaji | | |
| Print Date: | 19-May-25 | Drawn By: | K Parikh |
| Checked By: | K Patel | Approved By: | M Shah |

MAMTA SHAH & ASSOCIATES
Architects & Interior Designers
C-12, Chanakyapuri Society,
Chanakyapuri, Char Rasta,
New Sarna Road, Baroda
Ph. No. +91 965 2712267 / 2710967
mamta@msain.com / www.msain.com

Client: Gujarat Mineral Development corporation